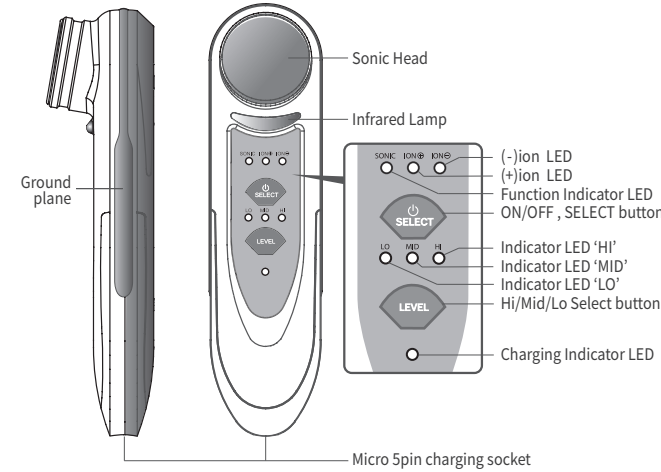




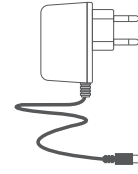
ANYMI SONIC USER'S MANUAL



MAIN UNIT



AC adapter(Micro 5pin)

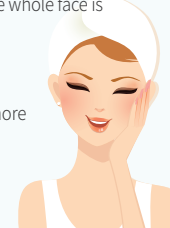


Cotton ring



Device description

- The width of the top part is adjustable to different faces.**
Different widths of the top of the device can be selected for facial massage.
- Ultrasonic 1MHz capacity**
The micro vibration of one million ultrasonic waves per second is effective in relieving the pain in joints and shoulder muscles among others.
- Long-lasting use**
Ultrasonic function use may last approximately one hour and ion function for seven hours
- Safe design**
There is a feature through which only the user can start the device.
- Automatic turn-off function**
The ideal time limit to use the device on the whole face is approximately ten minutes. The device is automatically turned off after 12 minutes.
- Safety alert**
An alert buzzer sound is on when using ultrasonic or ion function for one spot for more than ten seconds. Please change the spot when you hear the sound to maintain healthy skin.



Device features

- What is ultrasonic function?**
The micro vibration of 1MHz (one million per second) and thermal function of the device help make your skin clear and healthy.
- What is iontophoresis?**
Iontophoresis is a method to transfer medical ion through the skin or membrane into the body using a direct current. The ion temporarily relieves skin barriers so that the ionized ingredients can penetrate deep into the skin. It is effective when used together with Vitamin C-based skin toner.
- Performance of ANYMI SONIC's been proven by performance test**
Laboratory : Wonkwang Health Science University
Test period : March 26, 2007~April 9, 2007
Result: As the result of current characteristic test it's determined that current is possible to iontophoresis because the single-phase rectangular wave output.

Safety Instructions

Excessive use of the ultrasonic device may compromise your health

- The device works only when the lower contact part is properly covered by the hand and the top part touches the skin.
- Do not place the top part of the device too long on one spot.
 - Please do not use on one spot for more than ten seconds. Please adjust to level Low when used for sensitive areas and use the device for a short period of time only.
 - Please do not use (-)(+) ion function on one spot for more than ten seconds. Using the device longer than ten seconds on one spot can be harmful.
- Please thoroughly remove moisture on the device after use and store it dried.
- Please immediately remove any foreign substance on the top of the device.
- Do not place any heavy object on the device or cord.
- Do not put pressure on the device or throw it.
- If unused for a long time, please store the device in a cool place after charging approximately 50 minutes.
- Please recharge the device once in every six months at least to prevent excessive discharge.
- Aged batteries are not subject to warranty.
- The batteries for the device can wear out in its performance if left excessively charged or discharged.

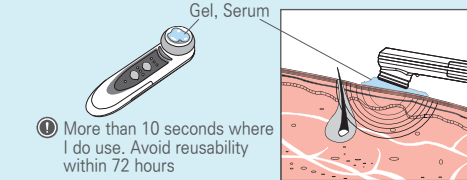
How to charge

- Plug adapter into the charging socket of AC adapter installed at the bottom of the device.
- Plug in the adapter plug into the outlet.
- When the red charging lamp is turned green, charging is complete.
- Unplug when the charging is complete.
- Do not use the device when charging. It can cause malfunction in the device or electric shock due to skin toner leak into the charger.
- Please charge the device when using it for the first time.
- Please store the device in a cool place when unused for a long time.

How to use

① Ultrasonic function

- Remove the makeup thoroughly with cleanser. The effectiveness of the device can be reduced if the makeup is not thoroughly removed.
- Put ample amount of common gel on the top of the device.
- Push the Select button once to light up the ultrasonic lamp which starts ultrasonic vibration.
(If not used, the light is automatically turned off in one minute.)
- Please select a button among High/Medium/Low levels. For use on sensitive skin, please select the level Low (LO).
- Please rub the device on the skin slowly in circular motion from inner part toward the outward (or from the top downward).
- Press the Select button for two seconds to turn the device off.
The device is automatically turned off after 12 minutes.
- The ideal time limit to use the device on the whole face is ten minutes. (The device is automatically turned off after 12 minutes.)
- Remove moisture on the device after use.
(Rub it in circular motion.)
Do not reuse the device within 72 hours of the previous use.

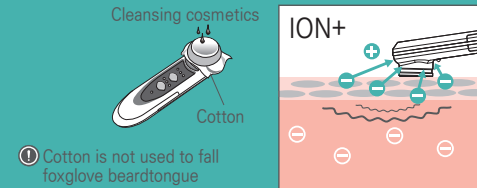


① More than 10 seconds where I do use. Avoid reusability within 72 hours

Professionals

② (+) Ion function (CLEANSING)

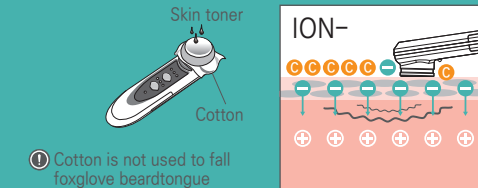
- Place cotton on the cotton ring and wet the cotton by spraying water or with cleansing toner.
- Push the Select button twice to switch the Ion lamp on and start the ion output.
- Please select a button among High/Medium/Low levels. For use on sensitive skin, please select the level Low (LO).
- Use the device with cotton touching the skin gently. Use the device for up to ten seconds for each spot.
- A buzzer sound is heard every ten seconds.
- Press the Select button for two seconds to turn the device off.
The device is automatically turned off if left unused for one minute.
- The ideal time limit to use the device on the whole face is ten minutes. (The device is automatically turned off after 12 minutes.)
- Remove moisture on the device after use.
- Use cotton with tightly clustered texture.



① Cotton is not used to fall foxglove beardtongue

③ (-) Ion function (Iontophoresis)

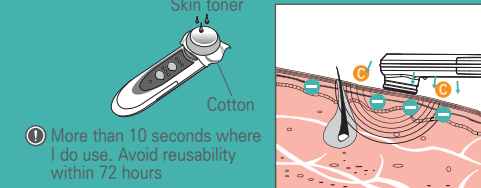
- Place cotton on the cotton ring and wet the cotton with skin toner.
- Push the Select button three times to switch the Ion lamp on and start the ion output.
- Please select a button among High/Medium/Low levels. For use on sensitive skin, please select the level Low (LO).
- Use the device with cotton touching the skin gently. Use the device for up to ten seconds for each spot.
- A buzzer sound is heard every ten seconds.
- Press the Select button for two seconds to turn the device off.
The device is automatically turned off if left unused for one minute.
- The ideal time limit to use the device on the whole face is ten minutes. (The device is automatically turned off after 12 minutes.)
- Remove moisture on the device after use.
- Use cotton with tightly clustered texture.



① Cotton is not used to fall foxglove beardtongue

④ Iontophoresis facilitator (Ultra sonic & (-) ion)

- Place cotton on the cotton ring and wet the cotton with skin toner.
- Push the Select button three times to switch the Ion lamp on and start the ion output.
- Please select a button among High/Medium/Low levels. For use on sensitive skin, please select the level Low (LO).
- Use the device with cotton touching the skin gently. Use the device for up to ten seconds for each spot.
- A buzzer sound is heard every ten seconds.
- Press the Select button for two seconds to turn the device off.
The device is automatically turned off if left unused for one minute.
- The ideal time limit to use the device on the whole face is ten minutes. (The device is automatically turned off after 12 minutes.)
- Remove moisture on the device after use.
(Rub it in circular motion)
- Do not reuse the device within 72 hours of the previous use.



① More than 10 seconds where I do use. Avoid reusability within 72 hours

INFORMATION

This product is not a medical device. Excessive use of it may lead to inappropriate results. Please do not use it more than two times a day (Do not use continuously), not more than three times a week.

Purpose : Personal skin beauty massager for home use
Product : Ultrasonic
Model : ANYMI SONIC
Input Power : AC 100 ~ 240V (50/60Hz)
Output Power : DC 5V, 700mA
Body dimension : 156(L) x 41(W)42(H)mm
Body weight : 119g
Charging time : Max. 3 hours
Operating time : Sonic approx. 1 hr / Ion approx. 7 hrs

- * This product is subject to change without notice.
- * Adapter is subject to change by the manufacturer.
- * Charging and using time can be different depending on the surrounding environment.
- * Date: November 30, 2015

How to store

- Keep it at well ventilated, not humid, no harmful chemicals.
- Store it away from direct sunlight.
- Recommended storage temperature 5~35 °C, humidity 20~80%

Checklist before requesting for A/S

- Q. I can't turn the device on even when the Select button is pushed.
A. Please press it for two seconds to switch it on
A. The battery may not be full. Please recharge it fully
- Q. There is no response even when the top of the device touches the skin with its switch on.
A. The top of the device might not have touched the skin. Please check whether the protection film is removed. Apply some liquid or gel on the skin.
A. The connection may be incomplete. Please hold the lower contact part well with the hand.
- Q. I felt skin irritation during or after use of the device.
A. Lower the level to LO (Low).
A. Stop using the device if the irritation gets worse.
- Q. Can I use the device during pregnancy?
A. Device use during pregnancy is prohibited as it can affect the fetus.
- Q. Can I use the device every day?
A. (+), (-) ion functions can be used every day.
A. If ultrasonic and ion functions are used together at the same time, please refrain from using it for the next 72 hours.
- Q. Can I use the device on the neck?
A. You can use the device on the neck but please avoid using it near the uvula.
- Q. Can I use the device on the parts which underwent plastic surgery?
A. Please consult your doctor on the issue.



Product Name	ULTRASONIC
Duration of Warranty	One year from the date of purchase
Date of Purchase	year m d Be sure to fill in the date of purchase. If the date of purchase is not written, the warranty may become invalid
Place of purchase	

If the malfunction is confirmed to be out of free service scope, A/S will be provided at a cost.

Scope of non-free A/S : Non-free A/S cases include but are not limited to the following during the warranty period

- The malfunction was caused by user's negligence (fall, damage and submersion of product etc.
- The malfunction is caused by external impact during use (scratch, discoloration etc.
- The malfunction is caused as the instructions were not followed.
- The device was disassembled and remodeled at user's discretion
- The certificate of warranty is not submitted or there is no date of purchase.
- The device was used for purposes other than home use (such as commercial use.
- The products in question are adapters or consumables.
- The malfunction is caused by the force majeure including fire, earthquake, flooding and thunderbolt.

Manufacturer : Promax Co., Ltd.
ILWOO B/D, 21, Saneop-ro 7beon-gil, Ojeong-gu, Bucheon-si, Gyeonggi-do, Korea
TEL: +82-2-839-2011 www.pmkor.com

Sales by : ANYMI Co. Ltd.
Sangga 5dong 213, Sinheung-ro, Wonmi-gu, Bucheon-si, Gyeonggi-do, Korea (Joong Dong We've The State)
TEL: +82-1800-6240 www.anymi.co.kr

Customer Service : +82 1800 6240

