



reevaa ^{H+}

Garvanic ion Scalp Care Device

USER MANUAL

Please read the manual carefully before use.

After reading it, please keep it in a place where you can see it at any time.

Since this product is for beauty purposes, use or sale for treatment purposes is prohibited by law.

Since it is a product based on the use of healthy skin, the user is responsible for trouble, etc.

if it is used in the area being treated by a doctor.

PRECAUTIONS FOR USE

Safety Precautions

1. With the ion ground held by hand, the brush must touch the scalp to produce galvanic ions. Do not wear vinyl gloves on your hands at this time.
2. After use, if there is any water left, wipe off the water completely and dry it before storing it.
3. Ensure that the battery is not completely discharged and remove the charging cable after charging is completed.
4. After using the device, remove foreign substances from the brush and keep it clean.
5. Do not hit or throw the device.
6. Children or the elderly should not use it by themselves.

Do not use the person who falls under the followings.

1. Patients with skin bleeding or skin diseases, or those with allergies.
2. Those who have surgery, wounds, or inflammation at the site of use.
3. Patients with hypertension symptoms, hemophilia and heart disease.
4. Pregnant women and those who are menstruating.
5. Electronic devices for life support such as implantable medical devices, artificial heart and lungs, electrocardiography, etc.
Users of wearable medical electronic devices.

Product Features

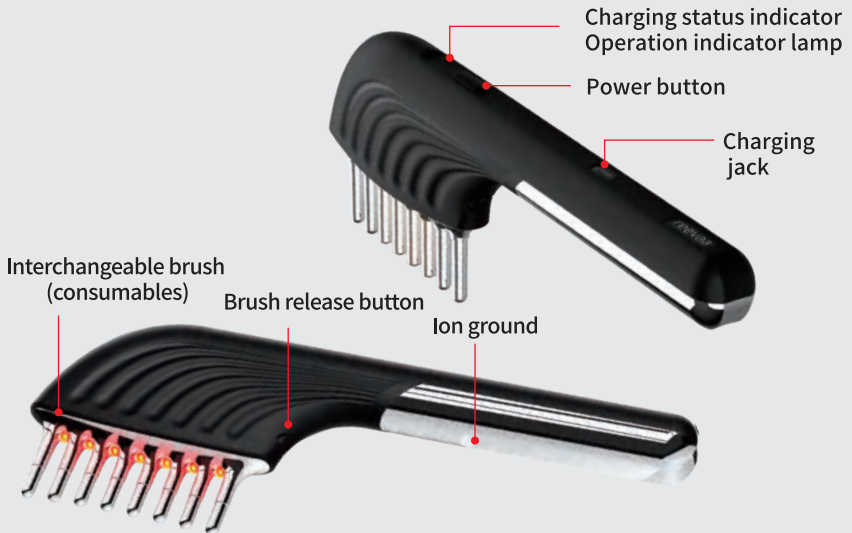
- 1 Apply evenly and directly to the scalp with ampoule injection bead brush
- 2 Increased effectiveness due to LED and galvanic ions
- 3 Vibration massage function helps blood circulation
- 4 Semi-permanent use with rechargeable

product efficacy

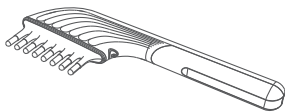
1. It relieves skin tension by transferring light and heat to the upper layer of the dermis.
2. It stimulates the cells in the scalp to provide nutrients to the hair smoothly.
3. It helps to strengthen the scalp barrier and effectively manages the scalp and hair.

COMPONENTS

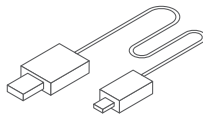
Name of each part



Components



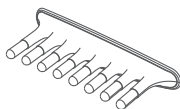
Main Body (infrared LED brush)



Charging cable



Manual



Injection brush



Dropper container (20ml)

ORDER OF USE

Order of use

REVAAH+ includes two brushes that help with hair and scalp care and can be used conveniently depending on the purpose. Use the brush according to the order of use below.

1



Injection brush *5 pages

Apply ampoule evenly and directly to the scalp with ampoule injection bead brush to help absorb useful ingredients.



Absorption



Vibration



Galvanic ion

2



RED LED (infrared ray) *7 pages

Infrared LEDs and galvanic ions increase the effect so that it can be deeply injected into the skin.



Infrared



Vibration

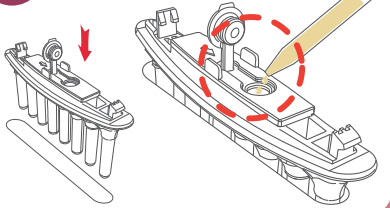


Galvanic ion

How to use 1: Injection brush

Apply directly to the scalp evenly with ampoule dosing bead brush.

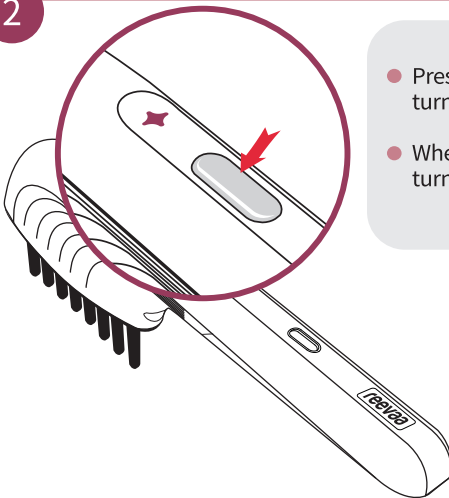
1



1. Place the injection brush on the tray and inject ampoule.

(Use of highly viscous liquid is prohibited because the outlet may be blocked)

2

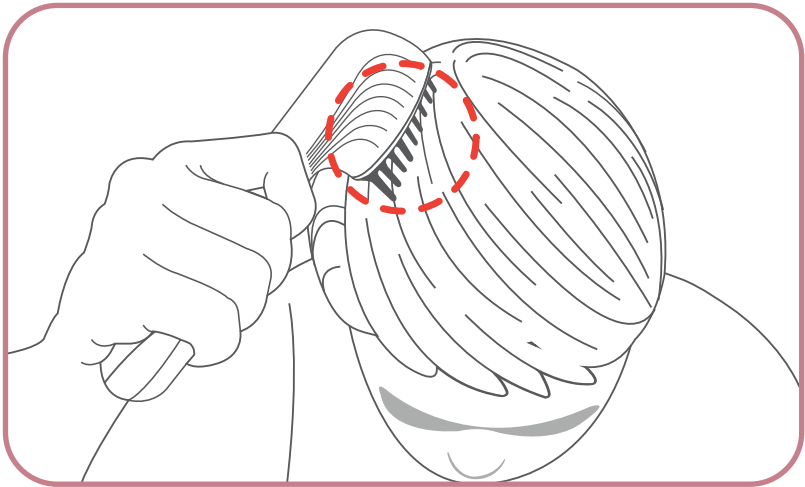


- Press and hold the power button to turn on iontophoresis and vibration.
- When on, press and hold the button to turn off the power

HOW TO USE

3. Be sure to hold the ion ground by hand, and then attach the brush to the scalp. Comb slowly as if you were combing your hair.

- * Depending on the scalp product used, the direction or method of brushing may vary.
- * It will not work if you wear vinyl gloves, etc.



4. After use, be sure to clean the brush with a wet tissue and store it.

Caution:

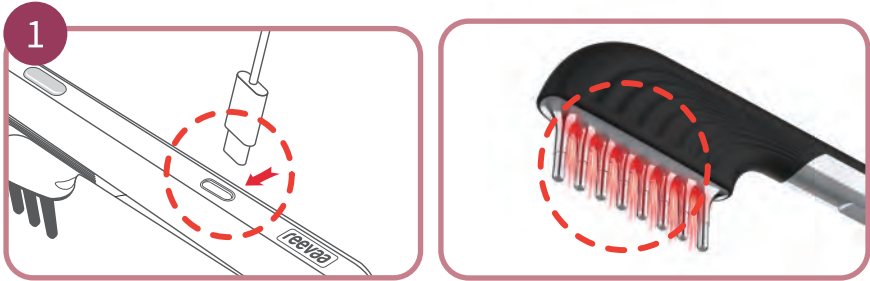
Be sure to empty the contents when not in use for a long time, after washing, it must be dried.

- * If the contents remain, the ampoule may harden and clog the outlet or contaminate the newly injected ampoule due to the remaining ampoule. This product is not waterproof, so do not use it in wet places such as toilets.

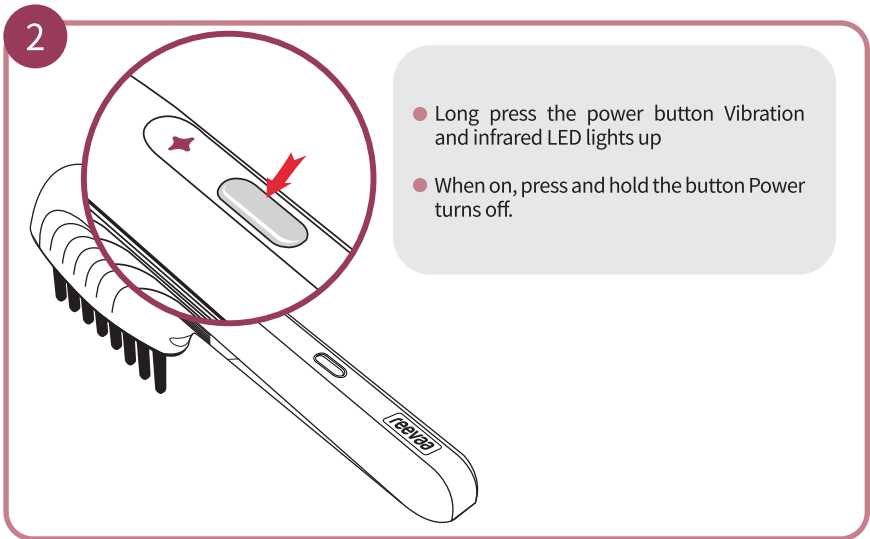
HOW TO USE

How to use 2: Infrared LED brush

Infrared LED and garvanic iontophoresis enhance the effectiveness.



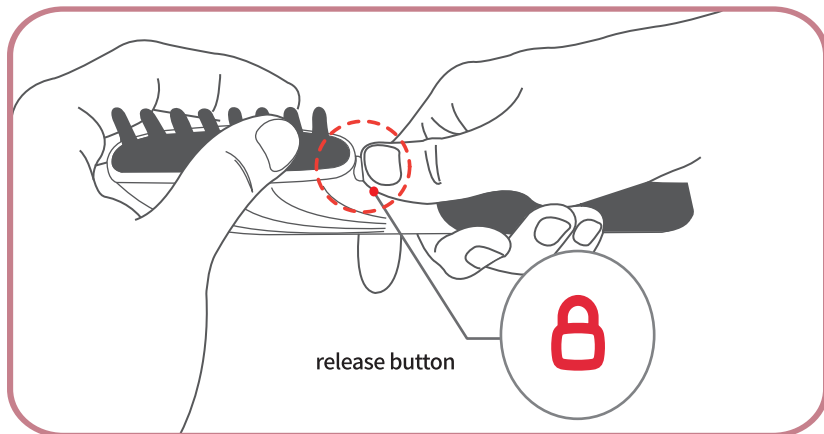
1. Charge the product in full before use.



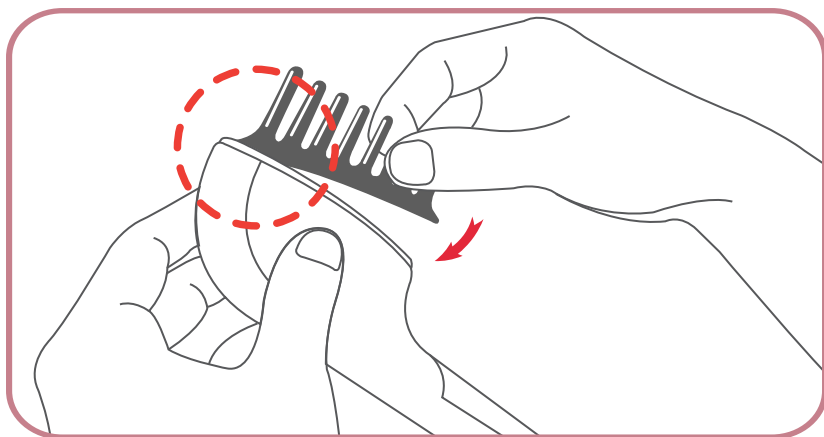
HOW TO USE

How to change brushes

1. As shown in the picture, when you press the brush release button by hand, the brush will come out of the device.



2. When changing brushes, As shown in the picture, the brush is assembled into the device by hanging it in the front first and pressing the back part.



* Brushes are consumables.

How to clean and store

1. After use, be sure to wipe the brush clean with a wet tissue and store it.
2. When not in use for a long time, be sure to charge the battery before storing it.
3. Store in a well-ventilated, dry place and free from harmful chemicals.
4. Keep out of direct sunlight.
5. The consumer recommended storage temperature is 1~40°C, and the consumer recommended storage humidity is 20~80%.

Q&A

- Q1. The power does not turn on even when the mode button is pressed.
→ The battery may be discharged, so please use it after charging.
- Q2. I felt a stinging sensation on my scalp while using the device.
→ Stop using it immediately and contact us.
- Q3. I can feel the vibration, but I don't know if the galvanic works well.
→ The ion ground must be grasped by hand to generate galvanic ions.
When using, do not wear vinyl gloves, etc. on your hands.

Product specification

- Model Name : Reeavaa H+
- Manufacturing number : Marked separately
- Date of Manufacture : Marked separately
- Body Weight(NET): 85g
- Power : 3.7V lithium polymer battery
- Packing Unit : 1 Set
(This product is subject to change without notice to improve product performance.)

Q&A

- Manufacturer : ILWOOELECTRON CO., LTD.
- Distributor : REEVAA CO., LTD.
Room 204-109, 2nd floor, Willtown, 46 Bul-ro
205beon-gil (Sang-dong), Bucheon-si, Gyeonggi-do
- Customer Service: 82-2-839-2011 <http://www.reevaa.co.kr>
Contact for more information. Copyright©2019 reevaa. All rights reserved

Posted on : [Enactment] May 18, 2022

A/S Warranty

- Model name : Reevea H+
- Warranty : 1 year from date of purchase
- Date of purchase : Year Month Day (Please write the date of purchase.)
- Where to buy :

In case of malfunction during normal use according to the user manual and precautions within the warranty period A/S is provided free of charge according to the warranty regulations.

Even during the warranty period, it is a paid service in the following cases.

- In case of malfunction due to user's negligence in handling (falling, submersion, damage, etc.).
- Appearance changes (scratches, discoloration, etc.) that occurred during use.
- In case of malfunction due to not following the precautions in the user manual.
- In case of failure due to repair, disassembly, or remodeling by the consumer.
- In case of malfunction or damage due to the use of separately sold products not provided by the seller.
- Failure to present this warranty or no date of purchase.
- When used for purposes other than home (shop, business).
- In case of malfunction due to consumables.
- In case of failure due to natural disasters such as fire, earthquake, flood, lightning, etc.

* This warranty cannot be reissued, so please keep it so you do not lose it.